



OCTOCOLOR Your choice of colour

Unmistakeable design and innumerable colour combinations – outstanding features of the OCTOCOLOR switch series from Merten. Adds a really personal touch to your home.

Choose from a number of basic colours for frames and rockers, as well as various shades for the contrasting ring.

This creates considerable freedom for interior design. From classical, muted colours to fashionable variations for children's rooms. And the modular principle means that colours can be recombined at will, at any time and in no time at all.

All OCTOCOLOR operating elements and inserts are also available for INSTABUS EIB.



Frame

+



Ring

+



Rocker

=



Switch

Contents	
OCTOCOLOR	
Switch covers	172
Rockers	172
Socket-outlets and accessories	173
Switches, electronic time switches and central plates	174
Covers for dimmers	176
Shutter switches	176
Shutter control system	177
Movement detectors	179
Room thermostats	180
EIB EASY	181
INSTABUS	181
Communication technique	184
Telecommunication	185
Data technique	187
TV/Audio	188
Export versions	189
Accessories	190
Frames	190
Surface-mounted housing	191



White/gold



Polar white/gold



Bronze metallic/
chrome



Titanium/chrome



- Blue
- Dark grey
- Polar white
- White
- Gold metallic
- Chrome
- Sapphire blue
- Mocha
- Black

- Notes on materials:
- TP: Breakproof thermoplast.
- ML: Breakproof thermoplast, metal-coloured.
- M: Metal.
- All articles marked discontinued are available until the end of 2003.

 Technical information: page 375

Switch covers



OctoColor rocker

for universal/one-way/two-way, intermediate switches, and neutral push button switches

Type	Art.-No.	PU	PG	Mat.	Info
white	3321 44	10/120	1	TP	
polar white	3321 19	10/260	1	TP	
blue	3321 79	5/120	1.2	TP	disc.
dark grey	3321 72	5/120	1.2	TP	disc.
ruby red	3321 06	5/120	1.2	TP	disc.
black	3321 22	5/120	1.2	TP	disc.
bronze metallic	3321 42	5/120	1.2	M	
titanium	3321 05	5/120	1.2	M	



Rocker with markings for On and Off positions

for 2 and 3 pole switch.

Type	Art.-No.	PU	PG	Mat.	Info
white	3322 44	10/120	1	TP	
polar white	3322 19	10/120	1	TP	
blue	3322 79	5/120	1.2	TP	disc.
dark grey	3322 72	5/120	1.2	TP	disc.
ruby red	3322 06	5/120	1.2	TP	disc.
black	3322 22	5/120	1.2	TP	disc.
bronze metallic	3322 42	5/120	1.2	M	
titanium	3322 05	5/120	1.2	M	



OctoColor rocker for two-circuit switches

for two circuit switches, double two-way switches and double push button switches.

Type	Art.-No.	PU	PG	Mat.	Info
white	3325 44	10/120	1	TP	
polar white	3325 19	10/120	1	TP	
blue	3325 79	5/120	1.2	TP	disc.
dark grey	3325 72	5/120	1.2	TP	disc.
ruby red	3325 06	5/120	1.2	TP	disc.
black	3325 22	5/120	1.2	TP	disc.
bronze metallic	3325 42	5/120	1.2	M	
titanium	3325 05	5/120	1.2	M	



OctoColor information rocker

for permanent labelling with choice of symbols (waiter, light, bell, heating emergency switch, neutral) for universal/one-way/two-way, intermediate and push-button switches.



Type	Art.-No.	PU	PG	Mat.	Info
white	3323 44	5/120	1	TP	
polar white	3323 19	5/120	1	TP	
blue	3323 79	5/120	1.2	TP	disc.
dark grey	3323 72	5/120	1.2	TP	disc.
ruby red	3323 06	5/120	1.2	TP	disc.
black	3323 22	5/120	1.2	TP	disc.
bronze metallic	3323 42	5/120	1.2	M	
titanium	3323 05	5/120	1.2	M	

Contents: per rocker 5 symbols (1 service, 1 lamp, 1 bell, 1 heating emergency, 1 neutral)



OctoColor rocker with oval opening for symbols

for control and push-button switches, with cutout for symbols or red control indicator.

Type	Art.-No.	PU	PG	Mat.	Info
white	3328 44	10/120	1	TP	
polar white	3328 19	10/120	1	TP	
blue	3328 79	5/120	1.2	TP	disc.
dark grey	3328 72	5/120	1.2	TP	disc.
ruby red	3328 06	5/120	1.2	TP	disc.
black	3328 22	5/120	1.2	TP	disc.
bronze metallic	3328 42	5/120	1.2	M	
titanium	3328 05	5/120	1.2	M	

With packing unit 5 we supply 9 symbols:

2 light, 1 door, 1 bell and 5 red transparent.

With packing unit 10 we supply 18 symbols:

4 light, 2 door, 2 bell and 10 red transparent.

Rockers for PushDown switches



OctoColor PushDown rocker

for PushDown two-way and intermediate switch inserts, recognisable by the blue switch unit

Type	Art.-No.	PU	PG	Mat.	Info
white	3331 44	10/120	1	TP	
polar white	3331 19	10/120	1	TP	
blue	3331 79	5/120	1.2	TP	disc.
dark grey	3331 72	5/120	1.2	TP	disc.
ruby red	3331 06	5/120	1.2	TP	disc.
black	3331 22	5/120	1.2	TP	disc.
bronze metallic	3331 42	5/120	1.2	M	
titanium	3331 05	5/120	1.2	M	



OctoColor PushDown rocker
for PushDown two-circuit switch inserts,
recognisable by the blue switch unit

Type	Art.-No.	PU	PG	Mat.	Info
white	3335 44	10/120	1	TP	
polar white	3335 19	10/120	1	TP	
blue	3335 79	5/120	1.2	TP	disc.
dark grey	3335 72	5/120	1.2	TP	disc.
ruby red	3335 06	5/120	1.2	TP	disc.
black	3335 22	5/120	1.2	TP	disc.
bronze metallic	3335 42	5/120	1.2	M	
titanium	3335 05	5/120	1.2	M	



OctoColor PushDown rocker with red transparent symbol
for PushDown control switches
recognisable by the blue switch unit

Type	Art.-No.	PU	PG	Mat.	Info
white	3338 44	10/120	1	TP	
polar white	3338 19	10/120	1	TP	
blue	3338 79	5/120	1.2	TP	disc.
dark grey	3338 72	5/120	1.2	TP	disc.
ruby red	3338 06	5/120	1.2	TP	disc.
black	3338 22	5/120	1.2	TP	disc.
bronze metallic	3338 42	5/120	1.2	M	
titanium	3338 05	5/120	1.2	M	



OctoColor PushDown rocker
for retractive switches.

Type	Art.-No.	PU	PG	Mat.	Info
white	3318 94	10/120	1	TP	
polar white	3318 99	10/120	1	TP	
blue	3318 68	5/120	1.2	TP	disc.
dark grey	3318 69	5/120	1.2	TP	disc.
ruby red	3318 66	5/120	1.2	TP	disc.
black	3318 91	5/120	1.2	TP	disc.
bronze metallic	3318 92	5/120	1.2	M	
titanium	3318 95	5/120	1.2	M	



OctoColor PushDown rocker with oval opening for symbols
for retractive switches.

Type	Art.-No.	PU	PG	Mat.	Info
white	3318 44	10/120	1	TP	
polar white	3318 19	10/120	1	TP	
blue	3318 79	5/120	1.2	TP	disc.
dark grey	3318 72	5/120	1.2	TP	disc.
ruby red	3318 06	5/120	1.2	TP	disc.
black	3318 22	5/120	1.2	TP	disc.
bronze metallic	3318 42	5/120	1.2	M	
titanium	3318 05	5/120	1.2	M	

With packing unit 5 we supply 9 symbols:

2 light, 1 door, 1 bell and 5 red transparent.

With packing unit 10 we supply 18 symbols:

4 light, 2 door, 2 bell and 10 red transparent.

Sockets and accessories

- The majority of OctoColor SCHUKO® sockets have contact clamps.
- All models with screw terminals are marked accordingly.
- Both terminals are certified connecting terminals to VDE 0620.

📄 Technical information: page 376



SCHUKO® socket-outlet
16 A, AC 250 V, DIN 49440

Type	Art.-No.	PU	PG	Mat.	Info
white	2340 44	10/100	1	TP	
polar white	2340 19	10/100	1	TP	
blue	2340 79	10/50	1.2	TP	disc.
dark grey	2340 72	10/50	1.2	TP	disc.
ruby red	2340 06	10/50	1.2	TP	disc.
black	2340 22	10/50	1.2	TP	disc.
bronze metallic	2340 42	10/100	1.2	M	
titanium	2340 05	10/50	1.2	M	



SCHUKO® socket-outlet with child protection
16 A, AC 250 V, DIN 49440

Increased contact protection in accordance with E VDE 0624.

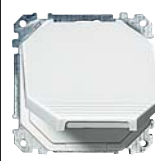
Type	Art.-No.	PU	PG	Mat.	Info
white	2341 44	10/50	1	TP	
polar white	2341 19	10/50	1	TP	
blue	2341 79	10/50	1.2	TP	disc.
dark grey	2341 72	10/50	1.2	TP	disc.
ruby red	2341 06	10/50	1.2	TP	disc.
black	2341 22	10/50	1.2	TP	disc.
bronze metallic	2341 42	10/40	1.2	M	
titanium	2341 05	10/40	1.2	M	



SCHUKO® socket-outlet with lettering space
16 A, 250 V~, DIN 49440

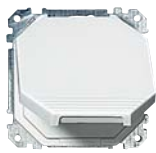
Type	Art.-No.	PU	PG	Mat.	Info
white	2339 44	10/50	1	TP	
polar white	2339 19	10/50	1	TP	
blue	2339 79	10/50	1.2	TP	disc.
dark grey	2339 72	10/50	1.2	TP	disc.
ruby red	2339 06	10/50	1.2	TP	disc.
black	2339 22	10/50	1.2	TP	disc.
bronze metallic	2339 42	10/40	1.2	M	
titanium	2339 05	10/40	1.2	M	

Contents: with 10 typewriter paper inserts.



SCHUKO® socket-outlet with hinged lid
16 A, AC 250 V, DIN 49440

Type	Art.-No.	PU	PG	Mat.	Info
white	2302 44	10/50	1	TP	
polar white	2302 19	10/50	1	TP	
blue	2302 79	10/50	1.2	TP	disc.
dark grey	2302 72	10/50	1.2	TP	disc.
ruby red	2302 06	10/50	1.2	TP	disc.
black	2302 22	10/50	1.2	TP	disc.
bronze metallic	2302 42	10/40	1.2	M	
titanium	2302 05	10/40	1.2	M	



SCHUKO® socket-outlet with hinged lid and child protection

16 A, AC 250 V, DIN 49440

Increased contact protection in accordance with E VDE 0624.

Type	Art.-No.	PU	PG	Mat.	Info
white	2322 44	10/50	1	TP	
polar white	2322 19	10/50	1	TP	
blue	2322 79	10/50	1.2	TP	disc.
dark grey	2322 72	10/50	1.2	TP	disc.
ruby red	2322 06	10/50	1.2	TP	disc.
black	2322 22	10/50	1.2	TP	disc.
bronze metallic	2322 42	10/40	1.2	M	
titanium	2322 05	10/40	1.2	M	



SCHUKO® socket-outlet with fine-wire fuse

10 A, AC 250 V, DIN 49440

With screw terminals

With fine-wire fuse T 10H

Type	Art.-No.	PU	PG	Mat.	Info
white	2736 44	1/50	1	TP	
polar white	2736 19	1/50	1	TP	
blue	2736 79	1/50	1.2	TP	disc.
dark grey	2736 72	1/50	1.2	TP	disc.
ruby red	2736 06	1/50	1.2	TP	disc.
black	2736 22	1/50	1.2	TP	disc.
bronze metallic	2736 42	1/50	1.2	M	
titanium	2736 05	1/50	1.2	M	



SCHUKO® socket-outlet

16 A, 250 V~, DIN 49440

for special circuit SV

for special circuit ZSV

Type	Art.-No.	PU	PG	Mat.	Info
green/SV	2340 04	10/50	1	TP	
orange/ZSV	2340 02	10/50	1	TP	



Labels

SV labels

ZSV label

Self-adhesive labels for hinged-lid sockets.

1 piece = 10 labels.

Type	Art.-No.	PU	PG	Mat.	Info
green/SV	5396 56	1/1000	1		
orange/ZSV	5396 54	1/1000	1		



Overvoltage protection module for socket-outlets in combinations

For all flush-mounted SCHUKO® socket-outlets.

Fits into normal 60 mm mounting box.

Mounting depth: 32 mm

Type of protection: fine protection

Fault information: acoustic signal

Particularities: test function

It is recommended to clearly mark the cover of the socket-outlet with overvoltage protection.

Type	Art.-No.	PU	PG	Mat.	Info
	5334 98	1/50	8		



SCHUKO® socket-outlet combined with rocker-switch

Fits into normal 60 mm mounting box.

With screw terminals.

Socket-outlet: 16 A, AC 250 V, DIN 49440

Rocker switch: 16 A, AC 250 V

Type	Art.-No.	PU	PG	Mat.	Info
white	2726 44	10/50	1	TP	
polar white	2726 19	10/50	1	TP	
blue	2726 79	10/50	1.2	TP	disc.
dark grey	2726 72	10/50	1.2	TP	disc.
ruby red	2726 06	10/50	1.2	TP	disc.
black	2726 22	10/50	1.2	TP	disc.



Potential equalisation socket-outlet

With 2 single-pole built-in plugs to DIN 42801 for screw fixing.

Connection up to 6 mm².

Without claws for screw fixing.

Type	Art.-No.	PU	PG	Mat.	Info
white	2972 44	10/50	1	TP	
polar white	2972 19	10/50	1	TP	



Rectangular socket connector

to DIN 42801 part 2.

for potential equalisation, suitable for art. no. 2972 ..

Connection up to 6 mm².

Type	Art.-No.	PU	PG	Mat.	Info
	2971 90	10/500	1		

Switches, central plates and accessories



Central plate with knob 15 min.

Marking: 15 minutes

for timer switch insert art. no. 5380 00.

Type	Art.-No.	PU	PG	Mat.	Info
white	5381 44	1/100	8	TP	
polar white	5381 19	1/100	8	TP	
blue	5381 79	1/100	8	TP	disc.
dark grey	5381 72	1/100	8	TP	disc.
ruby red	5381 06	1/100	8	TP	disc.
black	5381 22	1/100	8	TP	disc.
bronze metallic	5381 42	1/100	8	M	
titanium	5381 05	1/100	8	M	



Central plate with knob 120 min.

Marking: 120 minutes

for timer switch insert art. no. 5382 00.

Type	Art.-No.	PU	PG	Mat.	Info
white	5389 44	1/100	8	TP	
polar white	5389 19	1/100	8	TP	
blue	5389 79	1/100	8	TP	disc.
dark grey	5389 72	1/100	8	TP	disc.
ruby red	5389 06	1/100	8	TP	disc.
black	5389 22	1/100	8	TP	disc.
bronze metallic	5389 42	1/100	8	M	
titanium	5389 05	1/100	8	M	



Time switch

For programmed and time-dependent switching of lamps.

- 2 independent programme memories
- Pre-programmed switching times
- 18 switching times can be programmed
- Menu-guided operation / programming
- Running reserve up to 24 hours (without battery)
- Reset for setting back to factory set
- Random function can be activated (variation ± 15 min)
- Astro function (shifting ± 2 hours)
- Easy change between summer and winter time
- Timer (automatic switch-off after programmed time)
- Manual operation possible at any time

Nominal voltage: AC 230 V / 50 Hz
 Neutral conductor: necessary
 Switching capacity: 1000 W filament lamps
 750 W LV-halogen lamps with electronic transformers
 750 VA conventional transformers
 500 VA fluorescent lamps not compensated
 400 VA fluorescent lamps parallel compensated
 1000 VA fluorescent lamps duo-switch
 Connection clamps: Screw clamps for 2.5 mm² max. or 2 x 1.5 mm²

Type	Art.-No.	PU	PG	Mat.	Info
white	5820 44	1/24	8	TP	
polar white	5820 19	1/24	8	TP	
blue	5820 79	1/24	8	TP	disc.
dark grey	5820 72	1/24	8	TP	disc.
ruby red	5820 06	1/24	8	TP	disc.
black	5820 22	1/24	8	TP	disc.
bronze metallic	5820 42	1/24	8	ML	
titanium	5820 05	1/24	8	ML	

Contents: complete unit.



Time switch with sensor connection

For programmed and time-dependent switching of lamps. Sun / twilight sensor art. no. 5806 91 can be connected.

- 2 independent memory functions
- Pre-programmed switching times
- 18 switching times can be programmed
- Menu-guided operation / programming
- Running reserve up to 24 hours (without battery)
- Reset for setting back to factory set
- Random function can be activated (variation ± 15 min)
- Astro function (shifting ± 2 hours)
- Easy change between summer and winter time
- Timer (automatic switch-off after programmed time)
- Manual operation possible at any time

The sensor cable is connected to the time switch via the plug. Set brightness value of sun sensor approx. 20,000 Lux.

Nominal voltage: AC 230 V / 50 Hz
 Neutral conductor: necessary
 Switching capacity: 1000 W filament lamps
 750 W LV-halogen lamps with electronic transformers
 750 VA conventional transformers
 500 VA fluorescent lamps not compensated
 400 VA fluorescent lamps parallel compensated
 1000 VA fluorescent lamps duo-switch
 Connection clamps: Screw clamps for 2.5 mm² max. or 2 x 1.5 mm²

Type	Art.-No.	PU	PG	Mat.	Info
white	5830 44	1/24	8	TP	
polar white	5830 19	1/24	8	TP	
blue	5830 79	1/24	8	TP	disc.
dark grey	5830 72	1/24	8	TP	disc.
ruby red	5830 06	1/24	8	TP	disc.
black	5830 22	1/24	8	TP	disc.
bronze metallic	5830 42	1/24	8	ML	
titanium	5830 05	1/24	8	ML	

Contents: complete unit.



Pull string switch

10 A, AC 250 V

Type	Art.-No.	PU	PG	Mat.	Info
white/ two-way	3366 44	10/50	1	TP	
polar white/ two-way	3366 19	10/50	1	TP	



Central plate for universal switch insert with standardized semi-cylinder locks

for universal switch insert art. no. 3186 01.

for standardised semi-cylinder locks

40 mm length.

Type	Art.-No.	PU	PG	Mat.	Info
white	3346 44	1/60	8	TP	
polar white	3346 19	1/60	8	TP	
blue	3346 79	1/60	8	TP	disc.
dark grey	3346 72	1/60	8	TP	disc.
ruby red	3346 06	1/60	8	TP	disc.
black	3346 22	1/60	8	TP	disc.
bronze metallic	3346 42	1/60	8	M	
titanium	3346 05	1/60	8	M	



Central plate with knob for 3 position switch

for fan speed regulator art. no. 3174 00
with 0-1-2-3 marking

Type	Art.-No.	PU	PG	Mat.	Info
white	3173 44	1/100	8	TP	
polar white	3173 19	1/100	8	TP	

Covers for dimmers



Central plate with knob

suitable for all dimmer inserts up to 600 W/VA

Type	Art.-No.	PU	PG	Mat.	Info
white	5726 44	10/120	8	TP	
polar white	5726 19	10/120	8	TP	
blue	5726 79	5/120	8	TP	disc.
dark grey	5726 72	5/120	8	TP	disc.
ruby red	5726 06	5/120	8	TP	disc.
black	5726 22	5/120	8	TP	disc.
bronze metallic	5726 42	5/120	8	M	
titanium	5726 05	5/120	8	M	



Central plate with knob

suitable for all dimmer inserts up to 1000 W/VA

Type	Art.-No.	PU	PG	Mat.	Info
white	5715 44	1/100	8	TP	
polar white	5715 19	1/100	8	TP	
blue	5715 79	1/100	8	TP	disc.
dark grey	5715 72	1/100	8	TP	disc.
ruby red	5715 06	1/100	8	TP	disc.
black	5715 22	1/100	8	TP	disc.



Sensor touch plate

for manual operating
for Memory super dimmer, Super dimmer,
Halogen super dimmer, Relay switches,
Electronic switches, Electronic time switches,
Relay time switches and extensions.

Technical information: page 393

Type	Art.-No.	PU	PG	Mat.	Info
white	5742 44	1/100	8	TP	
polar white	5742 19	1/100	8	TP	
blue	5742 79	1/100	8	TP	disc.
dark grey	5742 72	1/100	8	TP	disc.
ruby red	5742 06	1/100	8	TP	disc.
black	5742 22	1/100	8	TP	disc.
bronze metallic	5742 42	1/100	8	M	
titanium	5742 05	1/100	8	M	



TELE touch plate

for remote and manual operation
for Memory super dimmer, Super dimmer, Halogen
super dimmer, remote controllable extensions,
Relay switches and Electronic switches.

Suitable for remote control Distance 2010 art. no.
5702 22 and Distance 2050programmable art. no.
5707 22.

Technical information: page 393

Type	Art.-No.	PU	PG	Mat.	Info
white	5749 44	1/100	8	TP	
polar white	5749 19	1/100	8	TP	
blue	5749 79	1/100	8	TP	disc.
dark grey	5749 72	1/100	8	TP	disc.
ruby red	5749 06	1/100	8	TP	disc.
black	5749 22	1/100	8	TP	disc.
bronze metallic	5749 42	1/100	8	M	
titanium	5749 05	1/100	8	M	

Shutter switches



OctoColor rocker

for shutter switches and push-button switches.

Type	Art.-No.	PU	PG	Mat.	Info
white	3315 44	5/120	1	TP	
polar white	3315 19	5/120	1	TP	
blue	3315 79	5/120	1.2	TP	disc.
dark grey	3315 72	5/120	1.2	TP	disc.
ruby red	3315 06	5/120	1.2	TP	disc.
black	3315 22	5/120	1.2	TP	disc.
bronze metallic	3315 42	5/120	1.2	M	
titanium	3315 05	5/120	1.2	M	



Central plate with knob

for shutter, push and lock insert art. no. 3172 00.

Type	Art.-No.	PU	PG	Mat.	Info
white	3170 44	1/100	1	TP	
polar white	3170 19	1/100	1	TP	
blue	3170 79	1/100	1.2	TP	disc.
dark grey	3170 72	1/100	1.2	TP	disc.
ruby red	3170 06	1/100	1.2	TP	disc.
black	3170 22	1/100	1.2	TP	disc.
bronze metallic	3170 42	1/100	1.2	M	
titanium	3170 05	1/100	1.2	M	



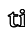
Central plate for shutter push-button insert with semi-cylinder lock

For shutter, push and lock insert art. no. 3185 01 and
shutter insert art. no. 3189 01.

For standardised semi-cylinder locks of 40 mm length.

Type	Art.-No.	PU	PG	Mat.	Info
white	3349 44	1/60	8	TP	
polar white	3349 19	1/60	8	TP	
blue	3349 79	1/60	8	TP	disc.
dark grey	3349 72	1/60	8	TP	disc.
ruby red	3349 06	1/60	8	TP	disc.
black	3349 22	1/60	8	TP	disc.
bronze metallic	3349 42	1/60	8	M	
titanium	3349 05	1/60	8	M	

Shutter control system

 Technical information: page 408



Shutter push-button

Push-button for operating blind/shutter motors.

To be completed with shutter control inserts art.-no. 5806 99 or 5806 98. Electronic locking of shutter control.

Push-button depression <1s: Stop or jogging for slat adjustment.

Push-button depression >1s: Permanent movement of blind/shutter (self-sustained).

 Technical information: page 410

Type	Art.-No.	PU	PG	Mat.	Info
white	5822 44	1/100	8	TP	
polar white	5822 19	1/100	8	TP	
blue	5822 79	1/100	8	TP	disc.
dark grey	5822 72	1/100	8	TP	disc.
ruby red	5822 06	1/100	8	TP	disc.
black	5822 22	1/100	8	TP	disc.
bronze metallic	5822 42	1/100	8	ML	
titanium	5822 05	1/100	8	ML	



Shutter push-button with sensor connection

Push-button for operating blind/shutter motors.

To be completed with shutter control inserts art. no. 5806 99 or 5806 98.

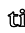
Possibility of connection for sun/twilight sensor art. no. 5806 91. Electronic locking of the shutter control.

The sensor channel is connected to the shutter push-button via a screw clamp at the shutter control insert.

Push-button depression <1s: Stop or jogging for slat adjustment.

Push-button depression >1s: Permanent movement of blind/shutter (self-sustained).

Set brightness level for sun sensor approx. 20,000 lux.

 Technical information: page 410

Type	Art.-No.	PU	PG	Mat.	Info
white	5825 44	1/100	8	TP	
polar white	5825 19	1/100	8	TP	
blue	5825 79	1/100	8	TP	disc.
dark grey	5825 72	1/100	8	TP	disc.
ruby red	5825 06	1/100	8	TP	disc.
black	5825 22	1/100	8	TP	disc.
bronze metallic	5825 42	1/100	8	ML	
titanium	5825 05	1/100	8	ML	



Shutter push-button with memory function and sensor connection

Push-button for operating blind/shutter motors.

To be completed with shutter control inserts art.-no. 5806 99 or 5806 98.

Using the memory function, the device stores a time for opening and shutting the blinds for reasons of presence simulation. These times are repeated in a 24-hour rhythm. The function can be activated or deactivated at any time. The times are saved by depressing the appropriate direction key for a long time (2 s).

Connection possibility for sun/twilight sensor art.-no. 5806 91.


Electronic locking of shutter control.

The sensor cable is connected to the shutter push-button via a screw terminal on the shutter control insert.

Push-button depression <1s: Stop or jogging for slat adjustment.

Push-button depression >1s: Permanent movement of blind/shutter (self-sustained).

Set brightness level for sun sensor approx. 20,000 lux.

 Technical information: page 410

Type	Art.-No.	PU	PG	Mat.	Info
white	5823 44	1/100	8	TP	
polar white	5823 19	1/100	8	TP	
blue	5823 79	1/100	8	TP	disc.
dark grey	5823 72	1/100	8	TP	disc.
ruby red	5823 06	1/100	8	TP	disc.
black	5823 22	1/100	8	TP	disc.
bronze metallic	5823 42	1/100	8	ML	
titanium	5823 05	1/100	8	ML	



Shutter push-button with IR receiver and sensor connection

Operation push-button for shutter motors.

To be completed with shutter control insert with extension entry art. no. 5806 99.

Remote-controllable with Distance 2010 art. no. 5702 22 and Distance 2050 programmable art. no. 5707 22.

Possibility of connecting sun/twilight sensor art.no. 5806 91. Electronic locking of the shutter control.

The sensor channel is connected to the shutter push-button via a screw clamp at the shutter control insert.

Button-push < 1s: Stop resp. touch operation for the adjustment of the blades

Button-push > 1s: Duration of the drive for shutters (self-hold)

Set brightness level for sun sensor approx. 20,000 lux.

 Technical information: page 411

Type	Art.-No.	PU	PG	Mat.	Info
white	5824 44	1/60	8	TP	
polar white	5824 19	1/60	8	TP	
blue	5824 79	1/100	8	TP	disc.
dark grey	5824 72	1/60	8	TP	disc.
ruby red	5824 06	1/60	8	TP	disc.
black	5824 22	1/60	8	TP	disc.
bronze metallic	5824 42	1/60	8	ML	
titanium	5824 05	1/60	8	ML	



Standard shutter timer switch

For programmed and time-dependent switching of blind/shutter motors.

To be completed with Standard shutter control insert art.-no. 5806 98. The extension input does not work in combination with shutter control insert with extension input art.-no. 5806 99.

- Operation via 4 push-buttons
 - Preprogrammed switching times
 - Switching time block Mo-Fr: 1xup, 1xdown time can be programmed
 - Switching time block Sa-Su: 1xup, 1xdown time can be programmed
 - Quick-programming function
 - Programming possible without flush-mounted insert
 - Running reserve up to 6 hours (without battery)
 - Reset to return to factory setting
 - Manual operation possible at any time
- Switchover time for changing direction: min. 1 second
Running precision: ±1 min. per month

Technical information: page 411

Type	Art.-No.	PU	PG	Mat.	Info
white	5839 44	1/30	8	TP	new
polar white	5839 19	1/30	8	TP	new
bronze metallic	5839 42	1/30	8	ML	new
titanium	5839 05	1/30	8	ML	new



Shutter timer switch

For programmed and time-dependent switching of blind/shutter motors.

To be completed with shutter control inserts art.-no. 5806 99 or 5806 98.

- 3 independent programme memories
- Preprogrammed switching times
- 18 programmable switching times
- Menu-guided operation/programming
- Running reserve up to 24 hours (without battery)
- Reset to return to factory setting
- Random generator can be activated (in the range ±15 mins.)
- Astro function (shifting ±2 hours.)
- Simple to switch from summer to winter time
- Individual running time can be programmed
- Manual operation possible at any time
- Electronic locking of shutter control.

Technical information: page 411

Type	Art.-No.	PU	PG	Mat.	Info
white	5821 44	1/30	8	TP	
polar white	5821 19	1/30	8	TP	
blue	5821 79	1/30	8	TP	disc.
dark grey	5821 72	1/30	8	TP	disc.
ruby red	5821 06	1/30	8	TP	disc.
black	5821 22	1/30	8	TP	disc.
bronze metallic	5821 42	1/30	8	ML	
titanium	5821 05	1/30	8	ML	



Shutter timer switch with sensor connection

For programmed and time-dependent switching of blind/shutter motors.

To be completed with shutter control inserts art.-no. 5806 99 or 5806 98.

- 3 independent programme memories
- Preprogrammed switching times
- 18 programmable switching times
- Menu-guided operation/programming
- Running reserve up to 24 hours (without battery)
- Reset to return to factory setting
- Random generator can be activated (in the range ±15 mins.)
- Astro function (shifting ±2 hours.)
- Simple to switch from summer to winter time
- Individual running time can be programmed
- Manual operation possible at any time
- Electronic locking of shutter control
- Connection possibility for sun/twilight sensor art. no. 5806 91.
- Brightness level programmable for sun protection and daylight control function. The sun sensor can also be used as a twilight sensor.

The sensor cable is connected to the shutter timer switch via the plug.

Technical information: page 411

Type	Art.-No.	PU	PG	Mat.	Info
white	5831 44	1/30	8	TP	
polar white	5831 19	1/30	8	TP	
blue	5831 79	1/30	8	TP	disc.
dark grey	5831 72	1/30	8	TP	disc.
ruby red	5831 06	1/30	8	TP	disc.
black	5831 22	1/30	8	TP	disc.
bronze metallic	5831 42	1/30	8	ML	
titanium	5831 05	1/30	8	ML	



Standard shutter control insert

AC 230 V

Can be complemented with all shutter push-buttons and shutter timers from the shutter control system. For local activation of a blind/shutter motor with end switch. The motor is protected due to the relay contacts, which are locked against each other. Without extension input.

- Full voltage: AC 230 V, 50 Hz
- Neutral conductor: **required**
- Breaking capacity: Max. 1 motor 1000 W
- Outputs: 2 contacts (locked against each other)
- Duration of impulse: 2 minutes
- Terminals: screw terminals for max. 2.5 mm² or 2x1.5 mm²

Technical information: page 408

Type	Art.-No.	PU	PG	Mat.	Info
1000 W	5806 98	1/30	8		new



Shutter control insert with extension input

AC 230 V

Can be complemented with all shutter push-buttons and shutter timers from the shutter control system. For local activation of a blind/shutter motor with end switch. A mechanical shutter switch/button or another shutter control insert for the creation of groups-/central controls can be connected via the extension input. Wind alarm function possible via extension input. The motor is protected due to the relay contacts, which are locked against each other.

The extension input does not work in combination with the standard shutter timer art.-no. 5809 ..., 5859 ..., 5839 ..., 5819 19.

Full voltage: AC 230 V, 50 Hz
Neutral conductor: **required**
Breaking capacity: Max. 1 motor 1000 W
Outputs: 2 contacts (locked against each other)

Switching time: a minimum of 500 ms
Terminals: screw terminals for max. 2.5 mm² or 2x1.5 mm²

Technical information: page 408

Type	Art.-No.	PU	PG	Mat.	Info
1000 VA	5806 99	1/30	8		



Sun / twilight sensor

Can be combined with shutter push-button and time switch with sensor connection. The light sensor is attached to the window pane with the suction cup. The position of the sensor determines the starting point of the shutter. Usable either as sun or as twilight sensor.

Connecting line: 2 m / LIYY 2x0, 14 mm

Technical information: page 412

Type	Art.-No.	PU	PG	Mat.	Info
polar white / 2 m	5806 91	1/54	8		



Wind sensor

For driving and protection of the shutter depending on wind speed.

This device is combined with the wind sensor interface art. no. 5806 93. The wind sensor is mounted on the roof or on the outside wall and transforms the measured wind speed into electrical signals.

Type of protection: IP 65

IP 65

Technical information: page 412

Type	Art.-No.	PU	PG	Mat.	Info
polar white	5806 92	1/2	8		



Wind sensor with heating

For driving and protection of the shutter depending on wind speed. With integrated heating for safe winter operation.

This device is combined with the wind sensor interface art. no. 5806 93. The wind sensor is mounted on the roof or on the outside wall and transforms the measured wind speed into electrical signals.

Type of protection: IP 65
Separate mains required: 24 V/70 W

IP 65

Technical information: page 412

Type	Art.-No.	PU	PG	Mat.	Info
polar white	5806 90	1/2	8		



Wind sensor interface

The analysis unit is combined with the wind sensor art. no. 5806 92 or 5806 90 and connected to the extension entry of the shutter control insert art. no. 5806 99. Also connectable to Merten Instabus-EIB by binary inputs.

Mains voltage: AC 230 V, 50 Hz
Output: Potential-free to operate the shutter control insert
Triggering time: Approx. 15 s. (after passing over the selected wind speed)
Continuing time: Approx. 15 min. (after passing below the selected wind speed)

Technical information: page 412

Type	Art.-No.	PU	PG	Mat.	Info
polar white	5806 93	1/25	8		

Movement detectors

Technical information: page 437



ARGUS 180 sensor module, flush-mounted

For OCTOCOLOR. Movement detector for indoor use. To be completed with electronic switch insert art. no. 5767 99 or relay switch insert art. no. 5768 99, frame + colour ring.

Number of detection levels: 1

Number of switching segments: 14

Range: approx. 8 m

Angle of surveillance: 180°

Light sensor: continuously adjustable from approx. 5 to approx. 1,000 lux

Time: adjustable in steps, 1 s, 40 s, 80 s, 3 min, 8 min

Technical information: page 437

Type	Art.-No.	PU	PG	Mat.	Info
white	5794 44	1/60	8	TP	
polar white	5794 19	1/60	8	TP	
blue	5794 79	1/60	8	TP	disc.
dark grey	5794 72	1/60	8	TP	disc.
ruby red	5794 06	1/60	8	TP	disc.
black	5794 22	1/60	8	TP	disc.
bronze metallic	5794 42	1/60	8	ML	
titanium	5794 05	1/60	8	ML	



ARGUS 180 sensor module with switch, flush mounted

For OCTOCOLOR. Movement detector for indoor use. With integrated switch for Off/Automatic/On.

To be completed with electronic switch insert art. no. 5767 99 or relay switch insert art. no. 5768 99 and frame + colour ring.

Number of detection levels: 1
 Number of switching segments: 14
 Range: approx. 8 m
 Angle of surveillance: 180°
 Light sensor: continuously adjustable from approx. 5 to approx. 1,000 lux adjustable in steps, 1 s, 40 s, 80 s, 3 min, 8 min
 Time:

Technical information: page 437

Type	Art.-No.	PU	PG	Mat.	Info
white	5793 44	1/60	8	TP	
polar white	5793 19	1/60	8	TP	
blue	5793 79	1/60	8	TP	disc.
dark grey	5793 72	1/60	8	TP	disc.
ruby red	5793 06	1/60	8	TP	disc.
black	5793 22	1/60	8	TP	disc.
bronze metallic	5793 42	1/60	8	ML	
titanium	5793 05	1/60	8	ML	



Electronic switch insert

AC 230 V

For ohmic loads such as filament lamps, 230V-halogen lamps.

To be combined with ARGUS 180 sensor module (with/without switch), art. no. 5799 .., 5798 .., 5793 .., 5794 .., 5796 .., 5797 .., 5792 .., 5787 .., 5752 .., 5759 ..

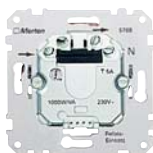
Breaking capacity: 25-300 W
 Neutral conductor: **not** required (2 conductor systems)



A maximum of only two electronic switch inserts can be switched in parallel.

Technical information: page 438

Type	Art.-No.	PU	PG	Mat.	Info
25-300 W	5767 99	1/50	8		



Relay switch insert

AC 230 V

For ohmic and complex loads such as filament lamps, fluorescent lamps, energy-saving lamps LV-halogen lighting etc.

To be combined with ARGUS 180 sensor modules (with/without switch), art.-no. 5799 .., 5798 .., 5793 .., 5794 .., 5796 .., 5797 .., 5792 .., 5787 .., 5752 .., 5759 ..

To be completed in the radio system with sensor cover with radio receiver for relay switch insert art.-no. 5932 .., 5933 ..

Breaking capacity: 0-1000 VA.
 Capacitive load: Max. 4 µF
 Neutral conductor: **required** (3 conductor systems)



Technical information: page 438

Type	Art.-No.	PU	PG	Mat.	Info
0-1000 VA	5768 99	1/50	8		

Room thermostat

Technical information: page 419



Central plate for room thermostat insert with ON/OFF switch

For room thermostat insert with ON/OFF switch art. no. 5363 00, or art. no. 5363 01.

Range limits integrated into the knob. Particularly thin construction.

Type	Art.-No.	PU	PG	Mat.	Info
white	5363 94	1/150	8	TP	
polar white	5363 99	1/150	8	TP	
blue	5363 79	1/150	8	TP	disc.
dark grey	5363 72	1/150	8	TP	disc.
ruby red	5363 06	1/150	8	TP	disc.
black	5363 91	1/150	8	TP	disc.
bronze metallic	5363 92	1/150	8	ML	
titanium	5363 95	1/150	8	ML	



Room temperature control insert with ON-/OFF-switch

The room temperature control insert with ON/OFF switch is to be completed with the corresponding central plate art.-no. 5361 .., 5363. .., 5373 .. from OCTOCOLOR, System Basis or System Design.

With thermal recirculation.

Fourth terminal for night-time temperature reduction.

Type	Art.-No.	PU	PG	Mat.	Info
230V~, 10(4)A	5363 00	1/50	8		
24V~, 1(1)A	5363 01	1/50	8		

Contents: room temperature control insert, plaster protection lid and screws.



Central plate for room thermostat insert with two-way contact

For room thermostat with two-way contact art. no. 5364 00 or art. no. 5364 01.

Range limits integrated into the knob. Particularly thin construction.

Type	Art.-No.	PU	PG	Mat.	Info
white	5364 94	1/150	8	TP	
polar white	5364 99	1/150	8	TP	
blue	5364 79	1/150	8	TP	disc.
dark grey	5364 72	1/150	8	TP	disc.
ruby red	5364 06	1/150	8	TP	disc.
black	5364 91	1/150	8	TP	disc.
bronze metallic	5364 92	1/150	8	ML	
titanium	5364 95	1/150	8	ML	



Room thermostat insert with two-way contact

The room thermostat insert with two-way contact can be combined with the corresponding central plate (art. no. 5364 94 /99 /98 /96 /91 /92 /95 of the Octo-Color range or art. no. 5365 24 /18 /13 /33 /38 /36 of the M1/Atelier/EPOCA range).

With thermal feedback.

For electrical under-floor heating if secondary heating must be locked.

For climate control (cooling).

For actuators which are open or closed when deenergized.

Type	Art.-No.	PU	PG	Mat.	Info
230V~, 5(2)A	5364 00	1/50	8		
24V~, 1(1)A	5364 01	1/50	8		

Package includes: room thermostat insert, protective cap for plaster and screws.



Central plate for floor thermostat insert with ON/OFF switch

For floor thermostat insert art. no. 5371 00.
Range limits integrated into the knob.
Particularly thin construction.

Type	Art.-No.	PU	PG	Mat.	Info
white	5372 94	1/150	8	TP	
polar white	5372 99	1/150	8	TP	
blue	5372 79	1/150	8	TP	disc.
dark grey	5372 72	1/150	8	TP	disc.
ruby red	5372 06	1/150	8	TP	disc.
black	5372 91	1/150	8	TP	disc.
bronze metallic	5372 92	1/150	8	ML	
titanium	5372 95	1/150	8	ML	



Floor thermostat insert with ON/OFF switch

The floor thermostat insert with ON/OFF switch can be combined with the corresponding central plate (art. no. 5372 94 /99 /98 /96 /91 /92 /95 of the Octo-Color range or art. no. 5371 74 /19 /06 /33 /38 /36 of the M1/Atelier/EPOCA range).

With remote sensor on 4 m lead, can be extended up to 50 m with 2-wire cable with 1.5 mm².

The remote sensor should be installed in a protective tubing.

Type	Art.-No.	PU	PG	Mat.	Info
230V~, 10(4)A	5371 00	1/12	8		

Supplied with room thermostat insert, remote sensor, protective cap for plaster and screws.

EIB EASY

The components in Design OCTOCOLOR can be found in the EIB EASY chapter, page 326.

HINWEIS

INSTABUS



Push-button, 1-fold, with indication of operation

OctoColor application module to be plugged onto the flush-mounted bus coupling unit. An LED indicates that the push-button is operational and can also be used for orientation.

With programmable 3-way rocker for controlling switch, dimmer and shutter actuators. Can also be programmed as multi-function switch with two group addresses per rocker and for controlling light scenes.

Type	Art.-No.	PU	PG	Mat.	Info
white	6201 44	1/100	9	TP	
polar white	6201 19	1/100	9	TP	
blue	6201 79	1/100	9	TP	disc.
dark grey	6201 72	1/100	9	TP	disc.
ruby red	6201 06	1/100	9	TP	disc.
bronze metallic	6201 42	1/100	9	ML	
titanium	6201 05	1/100	9	ML	

Leadtime for the colours blue, dark grey and ruby red: on demand.



Push-button, 2-fold, with indication of operation

OctoColor application module to be plugged onto the flush-mounted bus coupling unit. An LED indicates that the push-button is operational and can also be used for orientation.

With two programmable 3-way rockers for controlling switch, dimmer and shutter actuators. Can also be programmed as multi-function switch with two group addresses per rocker and for controlling light scenes.

Type	Art.-No.	PU	PG	Mat.	Info
white	6202 44	1/100	9	TP	
polar white	6202 19	1/100	9	TP	
blue	6202 79	1/100	9	TP	disc.
dark grey	6202 72	1/100	9	TP	disc.
ruby red	6202 06	1/100	9	TP	disc.
bronze metallic	6202 42	1/100	9	ML	
titanium	6202 05	1/100	9	ML	

Leadtime for the colours blue, dark grey and ruby red: on demand.



Push-button, 4-fold, with indication of operation

OctoColor application module to be plugged onto the flush-mounted bus coupling unit. An LED indicates that the push-button is operational and can also be used for orientation.

With four programmable 3-way rockers for controlling switch, dimmer and shutter actuators. Can also be programmed as multi-function push-button with two group addresses per rocker and for controlling light scenes.

Type	Art.-No.	PU	PG	Mat.	Info
white	6203 44	1/100	9	TP	
polar white	6203 19	1/100	9	TP	
blue	6203 79	1/100	9	TP	disc.
dark grey	6203 72	1/100	9	TP	disc.
ruby red	6203 06	1/100	9	TP	disc.
bronze metallic	6203 42	1/100	9	ML	
titanium	6203 05	1/100	9	ML	

Leadtime for the colours blue, dark grey and ruby red: on demand.



Push-button, 1-fold, with indication of operation and status

OctoColor application module to be plugged onto the flush-mounted bus coupling unit. An LED indicates that the push-button is operational and can also be used for orientation. With integrated programmable status LED.

With programmable 3-way rocker for controlling switch, dimmer and shutter actuators. Can also be programmed as multi-function push-button with two group addresses per rocker and for controlling light scenes.

Type	Art.-No.	PU	PG	Mat.	Info
white	6204 44	1/100	9	TP	
polar white	6204 19	1/100	9	TP	
blue	6204 79	1/100	9	TP	disc.
dark grey	6204 72	1/100	9	TP	disc.
ruby red	6204 06	1/100	9	TP	disc.
bronze metallic	6204 42	1/100	9	ML	
titanium	6204 05	1/100	9	ML	

Leadtime for the colours blue, dark grey and ruby red: on demand.



Push-button, 2-fold, with indication of operation and status

OctoColor application module to be plugged onto the flush-mounted bus coupling unit. An LED indicates that the switch is operational and can also be used for orientation. With two integrated programmable status LEDs.

With two programmable 3-way rockers for controlling switch, dimmer and shutter actuators. Can also be programmed as multi-function push-button with two group addresses per rocker and for controlling light scenes.

Type	Art.-No.	PU	PG	Mat.	Info
white	6205 44	1/100	9	TP	
polar white	6205 19	1/100	9	TP	
blue	6205 79	1/100	9	TP	disc.
dark grey	6205 72	1/100	9	TP	disc.
ruby red	6205 06	1/100	9	TP	disc.
bronze metallic	6205 42	1/100	9	ML	
titanium	6205 05	1/100	9	ML	

Leadtime for the colours blue, dark grey and ruby red: on demand.



Push-button, 4-fold, with indication of operation and status

OctoColor application module to be plugged onto the flush-mounted bus coupling unit. An LED indicates that the push-button is operational and can also be used for orientation. With four integrated programmable status LEDs.

With four programmable 3-way rockers for controlling switch, dimmer and shutter actuators. Can also be programmed as multi-function push-button with two group addresses per rocker and for controlling light scenes.

Type	Art.-No.	PU	PG	Mat.	Info
white	6206 44	1/100	9	TP	
polar white	6206 19	1/100	9	TP	
blue	6206 79	1/100	9	TP	disc.
dark grey	6206 72	1/100	9	TP	disc.
ruby red	6206 06	1/100	9	TP	disc.
bronze metallic	6206 42	1/100	9	ML	
titanium	6206 05	1/100	9	ML	

Leadtime for the colours blue, dark grey and ruby red: on demand.

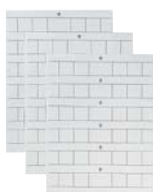


Labelling sheets for 1-fold push-button

For individual lettering of the OctoColor 1-fold push-button with texts or symbols. To combine with lettering insert (art. no. 6201 89 / 6201 88). The labelling software can be ordered separately under art. no. 6150 22.

Type	Art.-No.	PU	PG	Mat.	Info
white	6185 44	1/100	9		
polar white	6185 19	1/100	9		
bronze metallic	6185 42	1/100	9		
titanium	6185 05	1/100	9		

Delivery contains 3 sheets for 12 products.



Labelling sheets for 2-fold push-button

For individual lettering of the OctoColor 2-fold push-button with texts or symbols. To combine with lettering insert (art. no. 6202 89 / 6202 88). The labelling software can be ordered separately under art. no. 6150 22.

Type	Art.-No.	PU	PG	Mat.	Info
white	6186 44	1/100	9		
polar white	6186 19	1/100	9		
bronze metallic	6186 42	1/100	9		
titanium	6186 05	1/100	9		

Delivery contains 3 sheets for 12 products.



Labelling sheets for 4-fold push-button

For individual lettering of the OctoColor 4-fold push-button with texts or symbols. To combine with lettering insert (art. no. 6203 89 / 6203 88). The labelling software can be ordered separately under art. no. 6150 22.

Type	Art.-No.	PU	PG	Mat.	Info
white	6187 44	1/100	9		
polar white	6187 19	1/100	9		
bronze metallic	6187 42	1/100	9		
titanium	6187 05	1/100	9		

Delivery contains 3 sheets for 12 products.



OctoColor blind cover for flush-mounted bus coupling unit

OctoColor blind cover to be screwed onto the flush-mounted bus coupling unit.

Type	Art.-No.	PU	PG	Mat.	Info
white	6620 44	1/100	9	TP	
polar white	6620 19	1/100	9	TP	
blue	6620 79	1/100	9	TP	disc.
dark grey	6620 72	1/100	9	TP	disc.
ruby red	6620 06	1/100	9	TP	disc.
bronze metallic	6620 42	1/100	9	ML	
titanium	6620 05	1/100	9	ML	

Leadtime for the colours blue, dark grey and ruby red: on demand.



OctoColor serial data interface, flush-mounted

OctoColor application module for connecting a programming or diagnostic device with RS232 interface to the INSTABUS.

Can be plugged onto the flush-mounted bus coupling unit. With ON indicator and 9-pole sub-D socket connector.

Type	Art.-No.	PU	PG	Mat.	Info
white	6998 44	1/50	9	TP	
polar white	6998 19	1/50	9	TP	
blue	6998 79	1/50	9	TP	disc.
dark grey	6998 72	1/50	9	TP	disc.
ruby red	6998 06	1/50	9	TP	disc.
bronze metallic	6998 42	1/50	9	ML	
titanium	6998 05	1/50	9	ML	

Leadtime for the colours blue, dark grey and ruby red: on demand.



OctoColor binary input, flush-mounted / 2x10

OctoColor application module to be plugged onto the flush-mounted bus coupling unit. Internally generates a SELV signal voltage for connecting two conventional push-buttons or potential-free contacts to the INSTABUS.

Contact voltage: Approx. 10 V

Contact current: Approx. 10 mA

The response to leading or trailing input edges, cyclic transmission of input values and the response following a bus reset can be programmed for each channel. The debounce times can be set for all channels together.

Type	Art.-No.	PU	PG	Mat.	Info
white	6399 44	1/100	9	TP	
polar white	6399 19	1/100	9	TP	
blue	6399 79	1/100	9	TP	disc.
dark grey	6399 72	1/100	9	TP	disc.
ruby red	6399 06	1/100	9	TP	disc.
bronze metallic	6399 42	1/100	9	ML	
titanium	6399 05	1/100	9	ML	

Leadtime for the colours blue, dark grey and ruby red: on demand.



OctoColor IR receiver, flush-mounted

OctoColor application module to be plugged onto the flush-mounted bus coupling unit. Can be remote-controlled via the IR remote controls Distance 2010 (art. no. 5702 22) and Distance 2050programmable (art. no. 5707 22). The infrared commands are converted into corresponding data telegrams. Up to 50 channels can be controlled.

Can be programmed for the control of switching, dimming and blind actuators and for calling up scenarios. The IR receiver can be programmed with the EIB-Tool-Software (ETS) from version 2.0 upwards.

Type	Art.-No.	PU	PG	Mat.	Info
white	6218 44	1/100	9	TP	
polar white	6218 19	1/100	9	TP	
blue	6218 79	1/100	9	TP	disc.
dark grey	6218 72	1/100	9	TP	disc.
ruby red	6218 06	1/100	9	TP	disc.
bronze metallic	6218 42	1/100	9	ML	
titanium	6218 05	1/100	9	ML	

Leadtime for the colours blue, dark grey and ruby red: on demand.



ARGUS 180, flush-mounted

Application module for OCTOCOLOR. For attaching to the flush-mounted bus coupler art.-no. 6900 99.

Movement detector for indoors. When a movement is detected, a data telegram defined by the programming is transmitted. Can also be used as a twilight switch.

Range: 8 m
 Angle of surveillance: 180°
 Light sensor: infinite from approx. 5 to 1000 lux
 Time: 5 fixed set times or can be adjusted individually with software.

The function of an automatic staircase switch with a switch-off delay of one second to 152 hours can be set and can be switched or blocked from the bus. Threshold level of twilight switch adjustable via potentiometer. The status of the twilight switch can be issued to the bus in the form of a telegram. Cyclical transmitting of the movement detected can be programmed. Up to 4 functions can be activated simultaneously upon movement detection.

Type	Art.-No.	PU	PG	Mat.	Info
white	6215 44	1/50	9	TP	
polar white	6215 19	1/50	9	TP	
blue	6215 79	1/50	9	TP	disc.
dark grey	6215 72	1/50	9	TP	disc.
ruby red	6215 06	1/50	9	TP	disc.
bronze metallic	6215 42	1/50	9	ML	
titanium	6215 05	1/50	9	ML	

Leadtime for the colours blue, dark grey and ruby red: on demand.



Flush-mounted information display

Application module for System Basis. For attachment to flush-mounted bus coupler art.-no. 6900 99. With LC-D with a maximum of 4 x 16 characters and acoustic signal generator. The information display serves to display freely-programmable text and values and to control functions. Functions and texts can be allocated on up to 12 pages with a maximum of 4 lines. In addition, 12 lines of alarm indication signals can be allocated. Automatic allocation of alarm signal priorities which can be changed manually.

The information not displayed is selected with two keys on the display.

Two further keys are allocated to the display strip in a functional sense.

Display: LCD illuminated
 4 lines (16 characters) or
 2 lines (8 characters) or
 1 line (4 characters)

Operating elements: 4 keys

Signal generator: 2 signal tones

Alarm signals: Max. 12

Functions: switching, dimming, blind, temperature, continuous adjustment status, ASCII text, calling up light scenarios for MT701, load management, display of texts, values, date, time, time+date.

The flush-mounted info display can be integrated in the OCTOCOLOR range via the adaptor Art.-No. 5170 ...

Type	Art.-No.	PU	PG	Mat.	Info
white	6296 74	1/100	9	DP	new
polar white	6296 19	1/100	9	DP	new
bronze metallic	6296 42	1/100	9	ML	new
titanium	6296 05	1/100	9	ML	new



OctoColor room thermostat, flush-mounted / PI

OctoColor application module to be plugged onto the flush-mounted bus coupling unit art. no. 6900 99.

The device can be used for heating and cooling with infinitely variable INSTABUS positioning drives or for controlling switch actuators.

The following functions can be programmed:

Controller type: PI / 2-point / 3-point controller with cancellable integral-action component
 2-stage heating and 2-stage cooling

Output: Continuous from 0 to 100% or ON/OFF switching

Controller mode: - Heating with one controller output
 - Cooling with one controller output

- Heating and cooling with common or separate controller outputs

Operating modes: Deluxe, standby, night economy, frost protection, dew point alarm

Operation: - Setpoint adjustment can be parameterised via rotary control in the range
 - Presence button can be parameterised / cancelled

Type	Art.-No.	PU	PG	Mat.	Info
white	6221 44	1/50	9	TP	
polar white	6221 19	1/50	9	TP	
blue	6221 79	1/50	9	TP	disc.
dark grey	6221 72	1/50	9	TP	disc.
ruby red	6221 06	1/50	9	TP	disc.
bronze metallic	6221 42	1/50	9	ML	
titanium	6221 05	1/50	9	ML	

Leadtime for the colours blue, dark grey and ruby red: on demand.

Communications equipment



Carrying ring with central plate for inserts according to DIN 41524

as well as command and signal devices with a Ø16 mm hole e.g. Lumitas.
With second knock-out.

Type	Art.-No.	PU	PG	Mat.	Info
white	2952 96	10/50	1	TP	
polar white	2952 98	10/50	1	TP	
blue	2952 68	10/50	1.2	TP	disc.
dark grey	2952 69	10/50	1.2	TP	disc.
ruby red	2952 66	10/50	1.2	TP	disc.
black	2952 91	10/50	1.2	TP	disc.



Central plate

for light signal insert art. no. 3190 16.

Type	Art.-No.	PU	PG	Mat.	Info
white	3191 44	1/100	1	TP	
polar white	3191 19	1/100	1	TP	
blue	3191 79	1/100	1.2	TP	disc.
dark grey	3191 72	1/100	1.2	TP	disc.
ruby red	3191 06	1/100	1.2	TP	disc.
black	3191 22	1/100	1.2	TP	disc.
bronze metallic	3191 42	1/100	1.2	ML	
titanium	3191 05	1/100	1.2	ML	



Cable exit

With carrier and cable strain relief. For screw and claw fixing.

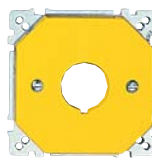
Type	Art.-No.	PU	PG	Mat.	Info
white	3927 44	1/50	1	TP	
polar white	3927 19	1/50	1	TP	
blue	3927 79	1/50	1.2	TP	disc.
dark grey	3927 72	1/50	1.2	TP	disc.
ruby red	3927 06	1/50	1.2	TP	disc.
black	3927 22	1/50	1.2	TP	disc.
bronze metallic	3927 42	1/50	1.2	M	
titanium	3927 05	1/50	1.2	M	



Central plate

for command devices with one hole fixing Ø22,5 mm e.g. Moeller, Lumitas, Square D etc.
Without claws for screw fixing.

Type	Art.-No.	PU	PG	Mat.	Info
white	3928 44	1/100	1	TP	
polar white	3928 19	1/100	1	TP	
blue	3928 79	1/100	1.2	TP	disc.
dark grey	3928 72	1/100	1.2	TP	disc.
ruby red	3928 06	1/100	1.2	TP	disc.
black	3928 22	1/100	1.2	TP	disc.



Central plate

for emergency off-switch with one hole fixing Ø22,5 mm e.g. Moeller, Lumitas, Square D etc.
Without claws for screw fixing.

Type	Art.-No.	PU	PG	Mat.	Info
yellow	3928 03	1/100	1	TP	



Blind cover

with carrier also for covering relays, buzzers and power booster art. no. 5740 99 and 5773 99 .
Without claws for screw fixing.

Type	Art.-No.	PU	PG	Mat.	Info
white	3926 44	1/100	1	TP	
polar white	3926 19	1/100	1	TP	
blue	3926 79	1/100	1.2	TP	disc.
dark grey	3926 72	1/100	1.2	TP	disc.
ruby red	3926 06	1/100	1.2	TP	disc.
black	3926 22	1/100	1.2	TP	disc.
bronze metallic	3926 42	1/100	1.2	M	
titanium	3926 05	1/100	1.2	M	



Intermediate ring to DIN 49075

for standard universal inserts, e.g. bells or multi-pole sockets.

Type	Art.-No.	PU	PG	Mat.	Info
white	5168 44	5/500	1	TP	
polar white	5168 19	5/500	1	TP	
blue	5168 79	5/500	1.2	TP	disc.
dark grey	5168 72	5/500	1.2	TP	disc.
ruby red	5168 06	5/500	1.2	TP	disc.
black	5168 22	5/500	1.2	TP	disc.
mocha	5168 16	5/500	1.2	TP	
anthracite	5168 14	5/500	1.2	TP	



Intermediate ring with hinged-lid

for standard inserts to DIN 49075 Particularly suitable for telephone sockets of the type TAE. The curved, left opening hinged-lid covers the insert but not the plug. The intermediate ring must be combined with adapter art. no. 5170 .. from the OctoColor programme.

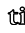
Type	Art.-No.	PU	PG	Mat.	Info
white	5174 74	5/75	1	TP	
polar white	5174 98	5/75	1	TP	
blue	5174 79	5/75	1.1	TP	disc.
dark grey	5174 72	5/75	1.1	TP	disc.
ruby red	5174 06	5/75	1.2	TP	
black	5174 22	5/75	1.1	TP	disc.
bronze metallic	5174 97	5/75	1.1	ML	
titanium	5174 05	5/75	1.1	ML	

Inserts for communication technique

 Technical information: page 383



Cover with labelling area
for data and telecommunication connections.
Inserts art. no. 4633 .. please order separately.

 Technical information: page 385

Type	Art.-No.	PU	PG	Mat.	Info
white	4633 44	1/50	1	TP	
polar white	4633 19	1/50	1	TP	
blue	4633 79	1/50	1.2	TP	disc.
dark grey	4633 72	1/50	1.2	TP	disc.
ruby red	4633 06	1/50	1.2	TP	disc.
black	4633 22	1/50	1.2	TP	disc.
bronze metallic	4633 42	1/50	1.2	ML	
titanium	4633 05	1/50	1.2	ML	

Contents: without insert.



Insert for blind cover
adaptable for special equipment.

Type	Art.-No.	PU	PG	Mat.	Info
black	4633 88	10/300	1	TP	



Insert for two D type connectors, 9-pole
art. no. 4650 09, break-out for second opening.

Type	Art.-No.	PU	PG	Mat.	Info
black	4633 91	10/300	1	TP	



Insert for two D type connectors 15-pole
art. no. 4650 15, break-out for second opening.

Type	Art.-No.	PU	PG	Mat.	Info
black	4633 92	10/300	1	TP	



Insert for two D type connectors 25-pole
art. no. 4650 25, break-out for second opening.

Type	Art.-No.	PU	PG	Mat.	Info
black	4633 93	10/300	1	TP	



Insert for BNC/TNC connectors
for two BNC/TNC connectors Ø12.5 mm
art. no. 4650 10, or for BNC/TNC connectors
Ø9.5 mm, (adaption rings included),
break-out for second opening.

Type	Art.-No.	PU	PG	Mat.	Info
black	4633 95	10/300	1	TP	



Insert for Twinax connectors
for two Twinax connectors Ø19 mm,
break-out for second opening.

Type	Art.-No.	PU	PG	Mat.	Info
black	4633 97	10/300	1	TP	



Insert for Modular Jack connector Cat.5
for one modular jack connector Cat. 5,
RJ 45 Merten art. no. 4655 95 or
AMP art. no.557819-1 and 569013-1.

Type	Art.-No.	PU	PG	Mat.	Info
black	4633 99	10/300	1	TP	



Insert for Modular Jack connectors
for one or two modular jack connectors for
example, Merten art. no. 4655 16 or 4655 18 or AMP
no.2 16000-1/216005-1/554546-1/553983-1
or Thomas+Betts no. 009-6-723F-40/-60/-80,
break-out for second opening.

Type	Art.-No.	PU	PG	Mat.	Info
black	4633 98	10/300	1	TP	



Insert for audio connector XLR
for audio connectors XLR round socket connectors
from Binder, Cannon, Neutrik or similar.

Type	Art.-No.	PU	PG	Mat.	Info
black	4633 90	10/300	1	TP	



Insert for audio plug XLR
for audio plugs XLR round socket connectors from
Binder, Cannon, Neutrik or similar.

Type	Art.-No.	PU	PG	Mat.	Info
black	4633 89	10/300	1	TP	



Insert with high-end loudspeaker socket connector
For loudspeaker connection up to 10 mm² max.

Type	Art.-No.	PU	PG	Mat.	Info
black	4633 87	5/150	1	TP	

Contents: with 2 loudspeaker connectors. Gold-plated contacts.



Insert for lightwave conductors ST-couplings
for two lightwave conductors ST-couplings

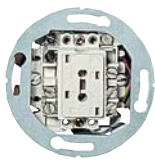
Type	Art.-No.	PU	PG	Mat.	Info
black	4633 86	10/300	1	TP	

Telecommunication



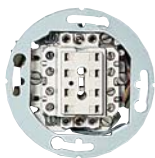
Central plate for telephone sockets ADO
4- and 8-pole, art. no. 4651 04 and 4651 08.

Type	Art.-No.	PU	PG	Mat.	Info
white	2937 44	5/200	1	TP	
polar white	2937 19	5/200	1	TP	
black	2937 22	5/200	1.2	TP	disc.
bronze metallic	2937 42	5/200	1.2	ML	
titanium	2937 05	5/200	1.2	ML	



Telephone connector ADo 4
To be completed with central plate art. no. 2937 ..

Type	Art.-No.	PU	PG	Mat.	Info
white/4-pole	4651 04	10/40	1		



Telephone connector ADo 8
To be completed with central plate art. no. 2937 ..

Type	Art.-No.	PU	PG	Mat.	Info
white/8-pole	4651 08	10/40	1		

Contents: a coding switch is in every 10 pack.



Telephone plug ADo S 4
for art. no. 4651 04.

Type	Art.-No.	PU	PG	Mat.	Info
white/4-pole	4654 04	5/250	1		



Telephone plug ADo S 8
for art. no. 4651 08.

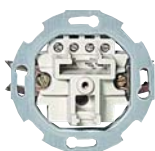
Type	Art.-No.	PU	PG	Mat.	Info
white/8-pole	4654 08	5/250	1		



Cable exit
for extension telephone sockets VDo 4
art. no. 4653 04 or general cable outlet up to Ø10 mm
max. With central screw for fixing to the connector
socket.
Without claws for screw fixing.

Type	Art.-No.	PU	PG	Mat.	Info
white	3927 96	1/100	1	TP	
polar white	3927 98	1/100	1	TP	
blue	3927 68	1/100	1.2	TP	disc.
dark grey	3927 69	1/100	1.2	TP	disc.
ruby red	3927 66	1/100	1.2	TP	disc.
black	3927 91	1/100	1.2	TP	disc.
bronze metallic	3927 97	1/100	1.2	M	
titanium	3927 95	1/100	1.2	ML	

With securing screw for telephone connector sockets VDo 4.



Telephone connector socket VDo 4
To be completed with cable outlet art. no. 3927 ..

Type	Art.-No.	PU	PG	Mat.	Info
4 pole	4653 04	10/40	1		



Central plate
for telephone sockets TAE
1 to 3 sockets, 4- or 6-pole, art. no. 4652 06, 4652 16,
4652 26 and 4652 36 .

Type	Art.-No.	PU	PG	Mat.	Info
white	2938 44	1/150	1	TP	
polar white	2938 19	1/150	1	TP	
blue	2938 79	1/150	1.2	TP	disc.
dark grey	2938 72	1/150	1.2	TP	disc.
ruby red	2938 06	1/150	1.2	TP	disc.
black	2938 22	1/150	1.2	TP	disc.
bronze metallic	2938 42	1/150	1.2	M	
titanium	2938 05	1/150	1.2	M	



TAE 1-gang telephone connector socket
For the German market.
To be completed with central plate art.-no. 2938 ... or
intermediate ring with hinged lid for telephone con-
nector sockets art.-no. 5174 .. and adapter
art.-no. 5170 ..

1×6 F: 1 Telephone
1×6 N: 1 Ancillary unit

Type	Art.-No.	PU	PG	Mat.	Info
white/6 F	4652 06	10/40	1	TP	
white/6 N	4652 16	10/40	1	TP	disc.



TAE 3-gang telephone connector socket
For the German market.
To be completed with central plate art.-no. 2938 .. or
intermediate ring with hinged lid for telephone con-
nector sockets art.-no. 5174 .. and adapter
art.-no. 5170 ..

2×6/6 NF/F: 2 Telephones, 1 ancillary unit
3×6NFN: 1 Telephone, 2 ancillary units

Type	Art.-No.	PU	PG	Mat.	Info
white/2×6/6 NF/F	4652 26	10/40	1	TP	
white/3×6 NFN	4652 36	10/40	1	TP	



RJ45/TAE combination socket
For the connection of a telephone and an analogue or
digital terminal unit via the 8-pole RJ45 socket.
To be completed with central plate art. no. 2928 ..,
2978 .., 2938 .., 2979 .. or intermediate ring art. no.
5171 .., 5160 .., 5181 .. or intermediate ring with
hinged lid for telecommunication connection sockets
art. no. 5174 .., 5182 ..

RJ45 connection via LSA terminals.

Type	Art.-No.	PU	PG	Mat.	Info
white	4657 07	10/40	1	TP	new

Available in the 2nd quarter of 2002



Central plates for RJ45 inserts
For RJ45 inserts art. no. 4657 01, 4657 02, 4657 03.

Type	Art.-No.	PU	PG	Mat.	Info
white	2920 44	10/120	1	TP	
polar white	2920 19	10/120	1	TP	
blue	2920 79	10/120	1.2	TP	disc.
dark grey	2920 72	10/120	1.2	TP	disc.
ruby red	2920 06	10/120	1.2	TP	disc.
black	2920 22	10/120	1.2	TP	disc.
bronze metallic	2920 42	10/120	1.2	ML	
titanium	2920 05	10/120	1.2	ML	



RJ45 insert 8/8

For the connection of analog and digital terminals via two 8-pole RJ45 sockets.
To be combined with central plate, art. no. 2927 .. or 2920 .., 2926 .., 2980 ..
With screw terminals.

Type	Art.-No.	PU	PG	Mat.	Info
white	4657 01	10/40	1	TP	



RJ45 insert 2x8

For the connection of analog and digital terminals via two 8-pole RJ45 sockets connected in parallel with bus-type cabling.
To be combined with central plate, art. no. 2927 .. or 2920 .., 2980 ..
With screw terminals.

Type	Art.-No.	PU	PG	Mat.	Info
white	4657 02	10/40	1	TP	



RJ45 insert 8/8 Cat. 5

For the connection of analog and digital terminals via two 8-pole RJ45 sockets.
To be combined with central plate, art. no. 2927 .. or 2920 .., 2980 ..
Connection via LSA terminals.

Type	Art.-No.	PU	PG	Mat.	Info
white	4657 03	1/50	1	TP	



RJ45 insert 8/8 Cat6

For the connection of analogue or digital terminal units via two 8-pole RJ45 sockets. To be combined with central plate, art. no. 2927 .. or 2920 .., 2926 .., 2980 ..
Connection via LSA terminals.

Type	Art.-No.	PU	PG	Mat.	Info
white	4657 06	10/40	1	TP	new

Available in the 2nd quarter of 2002



PTT central plate

Suitable for telephone socket-outlets acc. to the Dutch norm.

Type	Art.-No.	PU	PG	Mat.	Info
white	2923 84	10/180	1	TP	
polar white	2923 49	10/180	1	TP	
black	2923 52	10/180	1.2	TP	disc.
bronze metallic	2923 55	10/180	1.2	ML	
titanium	2923 56	10/180	1.2	ML	

Data technique



D type connector, 9-pole

Solder connections for max. section 0.6 mm².

Type	Art.-No.	PU	PG	Mat.	Info
9 pole	4650 09	5/500	1		

Contents: supplied with M 3 screw locking bolts.



D type connector, 15-pole

Solder connections for max. section 0.6 mm².

Type	Art.-No.	PU	PG	Mat.	Info
15 pole	4650 15	5/500	1		

Contents: supplied with M 3 screw locking bolts.



D type connector, 25-pole

Solder connections for max. section 0.6 mm².

Type	Art.-No.	PU	PG	Mat.	Info
25 pole	4650 25	5/500	1		

Contents: supplied with M 3 screw locking bolts.



BNC connector Ø12.5 mm

For crimping for data lines Ø6 mm

Type	Art.-No.	PU	PG	Mat.	Info
	4650 10	5/500	1		



Central plate

with label area, for IBM cabling systems

Type	Art.-No.	PU	PG	Mat.	Info
white	4630 44	1/100	1	TP	
polar white	4630 19	1/100	1	TP	
blue	4630 79	1/100	1.2	TP	disc.
dark grey	4630 72	1/100	1.2	TP	disc.
ruby red	4630 06	1/100	1.2	TP	disc.
black	4630 22	1/100	1.2	TP	disc.
bronze metallic	4630 42	1/100	1.2	ML	
titanium	4630 05	1/100	1.2	ML	

Contents: typewriter labels.

Without claws for screw fixing.



RJ45/TAE combination socket

For the connection of a telephone and an analogue or digital terminal unit via the 8-pole RJ45 socket.

To be completed with central plate art. no. 2928 .., 2978 .., 2938 .., 2979 .. or intermediate ring art. no. 5171 .., 5160 .., 5181 .. or intermediate ring with hinged lid for telecommunication connection sockets art. no. 5174 .., 5182 ..

RJ45 connection via LSA terminals.

Type	Art.-No.	PU	PG	Mat.	Info
white	4657 07	10/40	1	TP	new

Available in the 2nd quarter of 2002



Central plates for RJ45 inserts

For RJ45 inserts art. no. 4657 01, 4657 02, 4657 03.

Type	Art.-No.	PU	PG	Mat.	Info
white	2920 44	10/120	1	TP	
polar white	2920 19	10/120	1	TP	
blue	2920 79	10/120	1.2	TP	disc.
dark grey	2920 72	10/120	1.2	TP	disc.
ruby red	2920 06	10/120	1.2	TP	disc.
black	2920 22	10/120	1.2	TP	disc.
bronze metallic	2920 42	10/120	1.2	ML	
titanium	2920 05	10/120	1.2	ML	



RJ45 insert 8/8

For the connection of analog and digital terminals via two 8-pole RJ45 sockets.

To be combined with central plate, art. no. 2927.. or 2920 .., 2980 ..

With screw terminals.

Type	Art.-No.	PU	PG	Mat.	Info
white	4657 01	10/40	1	TP	



RJ45 insert 8/8 Cat. 5

For the connection of analog and digital terminals via two 8-pole RJ45 sockets.

To be combined with central plate, art. no. 2927.. or 2920 .., 2980 ..

Connection via LSA terminals.

Type	Art.-No.	PU	PG	Mat.	Info
white	4657 03	1/50	1	TP	



RJ45 insert 8/8 Cat6

For the connection of analogue or digital terminal units via two 8-pole RJ45 sockets. To be combined with central plate, art. no. 2927.. or 2920 .., 2926 .., 2980 ..

Connection via LSA terminals.

Type	Art.-No.	PU	PG	Mat.	Info
white	4657 06	10/40	1	TP	new

Available in the 2nd quarter of 2002



RJ45 insert 2x8

For the connection of analog and digital terminals via two 8-pole RJ45 sockets connected in parallel with bus-type cabling.

To be combined with central plate, art. no. 2927.. or 2920 .., 2980 ..

With screw terminals.

Type	Art.-No.	PU	PG	Mat.	Info
white	4657 02	10/40	1	TP	



Plug connector for Modular Jack Cat. 3

WE Western type conforms to US FCC 86, Group 3. Terminal allocation Telekom/ISDN-Modular Jack/8 pole: 1a/4, 1b/5, 2a/3, 2b/6.

Type	Art.-No.	PU	PG	Mat.	Info
black/6-pole RJ 11/ Cat. 3	4655 16	5/250	1		
black/8-pole RJ 45/ Cat. 3	4655 18	5/250	1		



Plug connector for Modular Jack Cat. 5

WE Western type conforms to US FCC 86, Group 5. Terminal allocation Telekom/ISDN-Modular Jack/8-pole: 1a/4, 1b/5, 2a/3, 2b/6.

Type	Art.-No.	PU	PG	Mat.	Info
black/8-pole RJ 45/ Cat. 5	4655 95	5/250	1		



Central plate for AMP-ACO

for AMP communication system insert art. no. 829 581-1.

Type	Art.-No.	PU	PG	Mat.	Info
white	4634 44	1/100	1	TP	
polar white	4634 19	1/100	1	TP	

TV / Audio



Loudspeaker socket-outlet

with 2 loudspeaker connectors DIN 41529 and central plate for mono- and stereo systems. With screw connectors up to 2.5 mm².

Type	Art.-No.	PU	PG	Mat.	Info
white	2952 44	10/50	1	TP	
polar white	2952 19	10/50	1	TP	
blue	2952 79	10/50	1.2	TP	disc.
dark grey	2952 72	10/50	1.2	TP	disc.
ruby red	2952 06	10/50	1.2	TP	disc.
black	2952 22	10/50	1.2	TP	disc.
bronze metallic	2952 42	10/50	1.2	M	
titanium	2952 05	10/50	1.2	M	



Central plate

for coaxial antenna sockets to DIN 45330 e.g. AEG, Astro, Bosch, Fuba, Hirschmann, Kathrein, Philips, Polytron, Siemens, Wisi, Zehnder usw. With third hole for satellite connector.

Type	Art.-No.	PU	PG	Mat.	Info
white	2943 44	5/250	1	TP	
polar white	2943 19	5/250	1	TP	
blue	2943 79	5/250	1.2	TP	disc.
dark grey	2943 72	5/250	1.2	TP	disc.
ruby red	2943 06	5/250	1.2	TP	disc.
black	2943 22	5/250	1.2	TP	disc.
bronze metallic	2943 42	5/250	1.2	ML	
titanium	2943 05	5/250	1.2	ML	



Wideband cable / satellite antenna through-box, 2-gang

DIN EN 50083-1/A1, DIN EN 80083-2/A1. Broadband directional coupler socket for looped-through systems in broadband cable systems, master antenna systems and in-house satellite distribution systems.

With screw and claw fixing. Suitable for flush-mounted sockets with 55-65 mm diameter .

To be combined with central plate for antenna sockets art. no. 2948 .., 2941 .., 2943 .., 2975 ..

Type	Art.-No.	PU	PG	Mat.	Info
	4660 98	10/40	1		



Wideband cable / satellite antenna branch-circuit box, 2-gang

DIN EN 50083-1/A1, DIN EN 80083-2/A1.

Broadband single-connection socket for individual branch-circuits and star-type distribution systems in broadband cable systems, master antenna systems and in-house satellite distribution systems. With DC transmission via television connection.

With screw and claw fixing. Suitable for flush-mounted sockets with 55-65 mm diameter.

To be combined with central plate for antenna sockets art. no. 2948 .., 2941 .., 2943 .., 2975 ..

DC transmission: max. 24 V / 400 mA
Signal: 22 kHz and DiSEqC

Type	Art.-No.	PU	PG	Mat.	Info
	4660 99	10/40	1		



Satellite antenna socket, 3-gang

DIN EN 50083-1/A1, DIN EN 80083-2/A1.

3-gang single-connection satellite socket. For individual branch-circuits and star-type distribution systems in master antenna systems and in-house satellite distribution systems. With DC transmission via satellite connection.

With screw and claw fixing. Suitable for flush-mounted sockets with 55-65 mm diameter.

To be combined with central plate for antenna sockets art. no. 2948 .., 2941 .., 2943 .., 2975 ..

DC transmission: max. 24 V / 320 mA
Signal: 22 kHz and DiSEqC

Type	Art.-No.	PU	PG	Mat.	Info
	4660 97	10/40	1		



Central plate for Hirschmann four-hole antenna-socket outlets

The central plate is to be completed with the four-hole antenna socket-outlet art. no. GEVU 15S or EVU 02F from Hirschmann.

Type	Art.-No.	PU	PG	Mat.	Info
white	4644 44	10/240	1	TP	
polar white	4644 19	10/240	1	TP	
blue	4644 79	10/240	1.2	TP	disc.
dark grey	4644 72	10/240	1.2	TP	disc.
ruby red	4644 06	10/240	1.2	TP	disc.
black	4644 22	10/240	1.2	TP	disc.
bronze metallic	4644 42	10/240	1.2	ML	
titanium	4644 05	10/240	1.2	ML	



Central plate for Ankaro four-hole antenna-socket outlets

The central plate is to be completed with the four-hole antenna socket-outlet art. no. SAT 400 EAS DC from Ankaro. Also suitable for antenna socket-outlet GUT 400 from Astro.

Type	Art.-No.	PU	PG	Mat.	Info
white	4645 44	10/240	1	TP	
polar white	4645 19	10/240	1	TP	
blue	4645 79	10/240	1.2	TP	disc.
dark grey	4645 72	10/240	1.2	TP	disc.
ruby red	4645 06	10/240	1.2	TP	disc.
black	4645 22	10/240	1.2	TP	disc.
bronze metallic	4645 42	10/240	1.2	ML	
titanium	4645 05	10/240	1.2	ML	



BNC connector Ø12.5 mm

For crimping for data lines Ø6 mm

Type	Art.-No.	PU	PG	Mat.	Info
	4650 10	5/500	1		

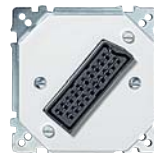


Central plate

for standard round plug connectors Ø30 mm sockets or plugs from 3- to 12-pole.

Type	Art.-No.	PU	PG	Mat.	Info
white	4631 44	1/100	1	TP	
polar white	4631 19	1/100	1	TP	
blue	4631 79	1/100	1.2	TP	disc.
dark grey	4631 72	1/100	1.2	TP	disc.
ruby red	4631 06	1/100	1.2	TP	disc.
black	4631 22	1/100	1.2	TP	disc.

Contents: 2 screws for fixing the connectors onto the central plate.



EURO AV socket

SCART connector to DIN-EN 50049

for connections between TV and peripheral units e.g. videorecorders, games consoles, videocameras, home computers etc.

Solder connections.

Type	Art.-No.	PU	PG	Mat.	Info
white	4632 44	1/100	1	TP	
polar white	4632 19	1/100	1	TP	
blue	4632 79	1/100	1.2	TP	disc.
dark grey	4632 72	1/100	1.2	TP	disc.
ruby red	4632 06	1/100	1.2	TP	disc.
black	4632 22	1/100	1.2	TP	disc.

Contents: with socket and carrier for screw fixing.

Export versions



Socket-outlet with earth pin and child protection

10/16 A, AC 250 V, CEE 7, standard V.

Increased contact protection in accordance with E VDE 0624.

With screw terminals.

Type	Art.-No.	PU	PG	Mat.	Info
white	2848 44	10/50	1	TP	
polar white	2848 19	10/50	1	TP	
blue	2848 79	10/50	1.2	TP	disc.
dark grey	2848 72	10/50	1.2	TP	disc.
ruby red	2848 06	10/50	1.2	TP	disc.
black	2848 22	10/50	1.2	TP	disc.
bronze metallic	2848 42	10/40	1.2	M	
titanium	2848 05	10/40	1.2	M	



Socket-outlet without earth

10/16 A, 250 V~

CEE 7, standard XIII.

With screw terminals.

Without claws for screw fixing.

Double socket-outlet without earth available upon request.

Type	Art.-No.	PU	PG	Mat.	Info
white	2143 84	10/50	1	TP	
polar white	2143 49	10/50	1	TP	
blue	2143 79	10/50	1.2	TP	disc.
dark grey	2143 72	10/50	1.2	TP	disc.
ruby red	2143 06	10/50	1.2	TP	disc.
black	2143 52	10/50	1.2	TP	disc.
bronze metallic	2143 55	10/50	1.2	M	
titanium	2143 56	10/50	1.2	M	

Accessories



Symbols, oval

For rocker and PushDown switches with oval opening for symbols.

Type	Art.-No.	PU	PG	Mat.	Info
white/neutral	3955 30	100/4000	1		
white/light	3956 30	100/4000	1		
white/door	3957 30	100/4000	1		
white/bell	3958 30	100/4000	1		
clear/neutral	3955 68	100/4000	1		
clear/light	3956 68	100/4000	1		
clear/door	3957 68	100/4000	1		
clear/bell	3958 68	100/4000	1		
red tran./neutral	3959 30	100/4000	1		



Adapter

for installation of Atelier units in the OctoColor programme.

Type	Art.-No.	PU	PG	Mat.	Info
white	5170 94	10/300	1	TP	
polar white	5170 99	10/300	1	TP	
blue	5170 79	10/300	1.2	TP	disc.
dark grey	5170 72	10/300	1.2	TP	disc.
ruby red	5170 06	10/300	1.2	TP	disc.
anthracite	5170 98	10/300	1.2	TP	disc.
mocha	5170 96	10/300	1.2	TP	disc.
black	5170 22	10/300	1.2	TP	disc.
bronze metallic	5170 42	10/300	1.2	ML	
titanium	5170 05	10/300	1.2	ML	



Assortment of special screws

Contents: 10 screws for additional screw attachment of OctoColor, System M or System Design frames.

The bearing plate of the rocker can be attached to the connector with 2 screws.

Type	Art.-No.	PU	PG	Mat.	Info
	3998 98	10/1000	1		

Frames

 Technical information: page 375



OctoColor frame, 1-gang

Colour ring art. no. 3999 .. to be ordered separately.

Type	Art.-No.	PU	PG	Mat.	Info
white	3991 44	10/360	1	TP	
polar white	3991 19	10/360	1	TP	
blue	3991 79	2/196	1.2	TP	disc.
dark grey	3991 72	2/196	1.2	TP	disc.
ruby red	3991 06	2/196	1.2	TP	disc.
black	3991 22	2/196	1.2	TP	disc.
bronze metallic	3991 42	2/270	1.2	M	
titanium	3991 05	2/180	1.2	M	



OctoColor frame, 2-gang

for vertical and horizontal installation.

Colour ring art. no. 3999 .. to be ordered separately.

Type	Art.-No.	PU	PG	Mat.	Info
white	3992 44	10/240	1	TP	
polar white	3992 19	10/240	1	TP	
blue	3992 79	2/100	1.2	TP	disc.
dark grey	3992 72	2/100	1.2	TP	disc.
ruby red	3992 06	2/100	1.2	TP	disc.
black	3992 22	2/100	1.2	TP	disc.
bronze metallic	3992 42	2/100	1.2	M	
titanium	3992 05	2/100	1.2	M	



OctoColor frame, 3-gang

for vertical and horizontal installation.

Colour ring art. no. 3999 .. to be ordered separately.

Type	Art.-No.	PU	PG	Mat.	Info
white	3993 44	10/80	1	TP	
polar white	3993 19	10/80	1	TP	
blue	3993 79	2/68	1.2	TP	disc.
dark grey	3993 72	2/68	1.2	TP	disc.
ruby red	3993 06	2/68	1.2	TP	disc.
black	3993 22	2/68	1.2	TP	disc.
bronze metallic	3993 42	2/68	1.2	M	
titanium	3993 05	2/68	1.2	M	



OctoColor frame, 4-gang

for vertical and horizontal installation.

Colour ring art. no. 3999 .. to be ordered separately.

Type	Art.-No.	PU	PG	Mat.	Info
white	3994 44	2/44	1	TP	
polar white	3994 19	2/44	1	TP	
blue	3994 79	2/44	1.2	TP	disc.
dark grey	3994 72	2/44	1.2	TP	disc.
ruby red	3994 06	2/44	1.2	TP	disc.
black	3994 22	2/44	1.2	TP	disc.
bronze metallic	3994 42	2/44	1.2	M	
titanium	3994 05	2/44	1.2	M	



OctoColor frame, 5-gang

for vertical and horizontal installation.
Colour ring art. no. 3999 .. to be ordered separately.

Type	Art.-No.	PU	PG	Mat.	Info
white	3995 44	1/38	1	TP	
polar white	3995 19	1/38	1	TP	
blue	3995 79	1/38	1.2	TP	disc.
dark grey	3995 72	1/38	1.2	TP	disc.
ruby red	3995 06	1/38	1.2	TP	disc.
black	3995 22	1/38	1.2	TP	disc.
bronze metallic	3995 42	1/38	1.2	M	
titanium	3995 05	1/38	1.2	M	



Colour rings for OctoColor frames

Required:
One colour ring for 1-gang frames
two colour rings for 2-gang frames etc.

Type	Art.-No.	PU	PG	Mat.	Info
white	3999 44	10/300	1.2	TP	
polar white	3999 19	10/300	1.2	TP	
hellyellow	3999 57	10/300	1.2	TP	disc.
blue	3999 79	10/300	1.2	TP	
hellgreen	3999 58	10/300	1.2	TP	disc.
dark grey	3999 72	10/300	1.2	TP	
pastel turquoise	3999 23	10/300	1.2	TP	disc.
orange	3999 07	10/300	1.2	TP	disc.
fiord blue	3999 73	10/300	1.2	TP	disc.
black	3999 22	10/300	1.2	TP	
ruby red	3999 06	10/300	1.2	TP	disc.
sapphire blue	3999 11	10/300	1.2	TP	
mocha	3999 16	10/300	1.2	TP	
goldmetallic	3999 41	10/600	1.2	TP	
chrome	3999 39	10/600	1.2	TP	

Special colours can be supplied on demand. Price upon request.

Surface-mounted housing

- **Thermoplast version.**
- All housings are supplied with:
- screws for fixing the devices, lead and cable entries (15 mm). Suitable mini-trunking (15 x 15 mm) is supplied by the manufacturers of trunking systems.

Technical information: page 390



Surface-mounted housing, 1-gang

With closed base and two cable entrances, closed with blind washers.
Usable on every building material.

Type	Art.-No.	PU	PG	Mat.	Info
white	5121 44	1/40	1.5	TP	
polar white	5121 19	1/40	1.5	TP	
blue	5121 79	1/40	1.5	TP	disc.
dark grey	5121 72	1/40	1.5	TP	disc.
ruby red	5121 06	1/40	1.5	TP	
black	5121 22	1/40	1.5	TP	disc.
mocha	5121 16	1/40	1.5	TP	disc.



Surface-mounted housing, 2-gang

With closed base and guide slots for partition walls.
4 pre-formed cable entrances, closed with blind washers.

Usable on every building material.
Guide for partition walls.

Type	Art.-No.	PU	PG	Mat.	Info
white	5122 44	1/20	1.5	TP	
polar white	5122 19	1/20	1.5	TP	
blue	5122 79	1/20	1.5	TP	disc.
dark grey	5122 72	1/20	1.5	TP	disc.
ruby red	5122 06	1/20	1.5	TP	
black	5122 22	1/20	1.5	TP	disc.
mocha	5122 16	1/20	1.5	TP	disc.



Surface-mounted housing, 3-gang

With closed base and guide slots for partition walls.
4 pre-formed cable entrances, closed with blind washers.

Usable on every building material.
Guide for partition walls.

Type	Art.-No.	PU	PG	Mat.	Info
white	5123 44	1/15	1.5	TP	
polar white	5123 19	1/15	1.5	TP	
blue	5123 79	1/15	1.5	TP	disc.
dark grey	5123 72	1/15	1.5	TP	disc.
ruby red	5123 06	1/15	1.5	TP	
black	5123 22	1/15	1.5	TP	disc.
mocha	5123 16	1/15	1.5	TP	disc.



Cable entry

For cables and mini-trunks

Type	Art.-No.	PU	PG	Mat.	Info
white	5351 62	20/2000	1.5	TP	
polar white	5351 60	20/2000	1.5	TP	
blue	5351 79	20/2000	1.5	TP	disc.
dark grey	5351 72	20/2000	1.5	TP	disc.
ruby red	5351 66	20/2000	1.5	TP	
black	5351 69	20/2000	1.5	TP	disc.
mocha	5351 64	20/2000	1.5	TP	disc.



Mini-trunk entry (15 mm)

For trunks 15 x 15

Type	Art.-No.	PU	PG	Mat.	Info
white	5350 62	10/1000	1.5	TP	
polar white	5350 60	10/1000	1.5	TP	
blue	5350 79	10/1000	1.5	TP	disc.
dark grey	5350 72	10/1000	1.5	TP	disc.
ruby red	5350 66	10/1000	1.5	TP	
black	5350 69	10/1000	1.5	TP	disc.
mocha	5350 64	10/1000	1.5	TP	disc.